



**State Water Resources Control Board
 Temporary Urgency Change Order (6/17/2022)
 Russian River Hydrologic Report
 December 2, 2022 - December 8, 2022**

Prepared as a requirement of the Order approving Sonoma Water's Petition for Temporary Urgency Change in Permits 12947A, 12949, 12950, and 16596 (Applications 12919A, 15736, 15737, and 19351).

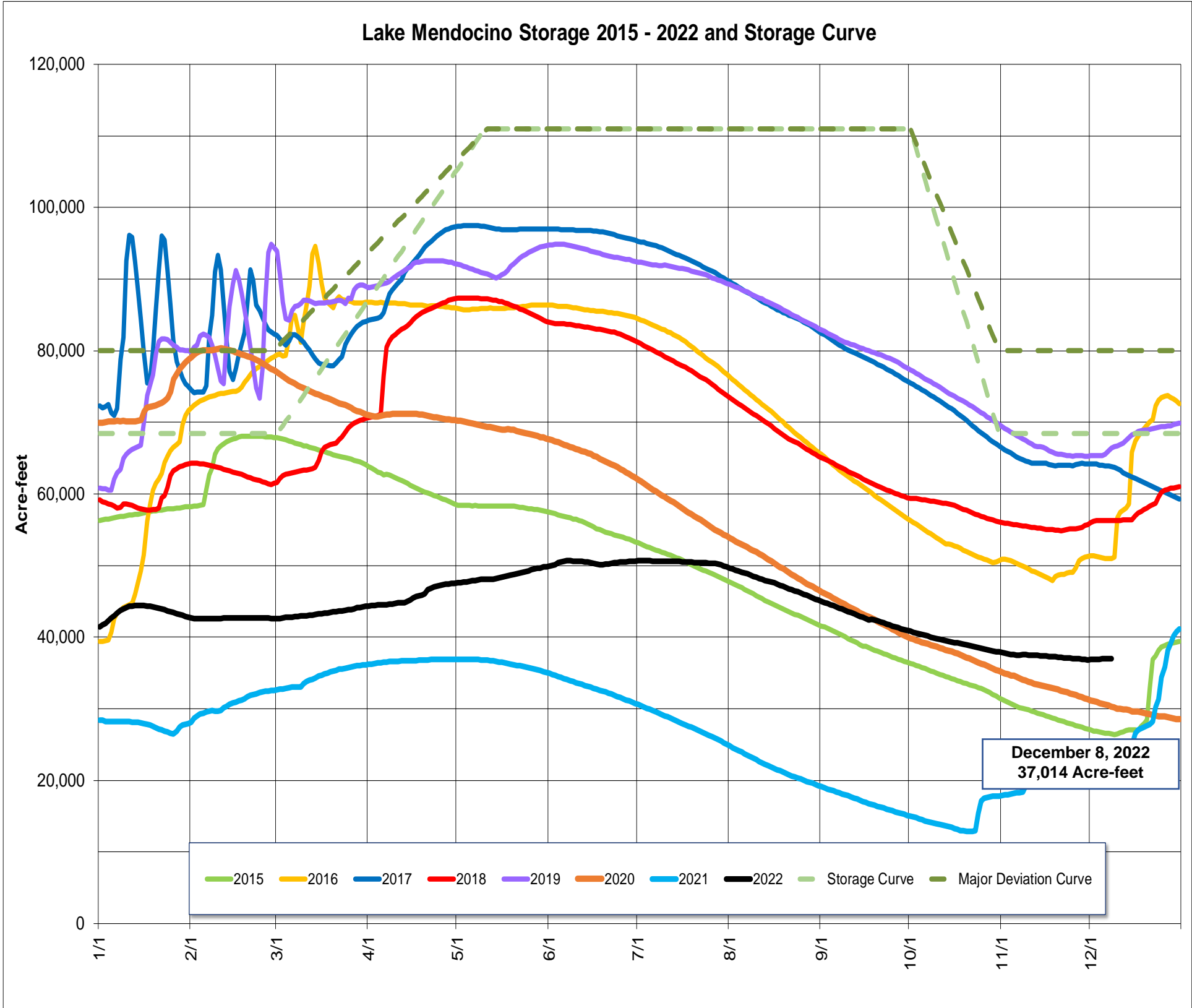
Instream Flow Requirements as of December 8, 2022

Basis	Reach	Instantaneous (cfs)	5-day Average (cfs)
Modified Per Order: Critical Condition	Upper Russian River	15	25
D-1610: Normal Condition	Dry Creek	105	-
Modified Per Order: Critical Condition	Lower Russian River	25	35

Upper and Lower Russian River based on criteria as established in the Order issued 6/17/2022.

Lake Mendocino

Lake Mendocino Storage 2015 - 2022 and Storage Curve

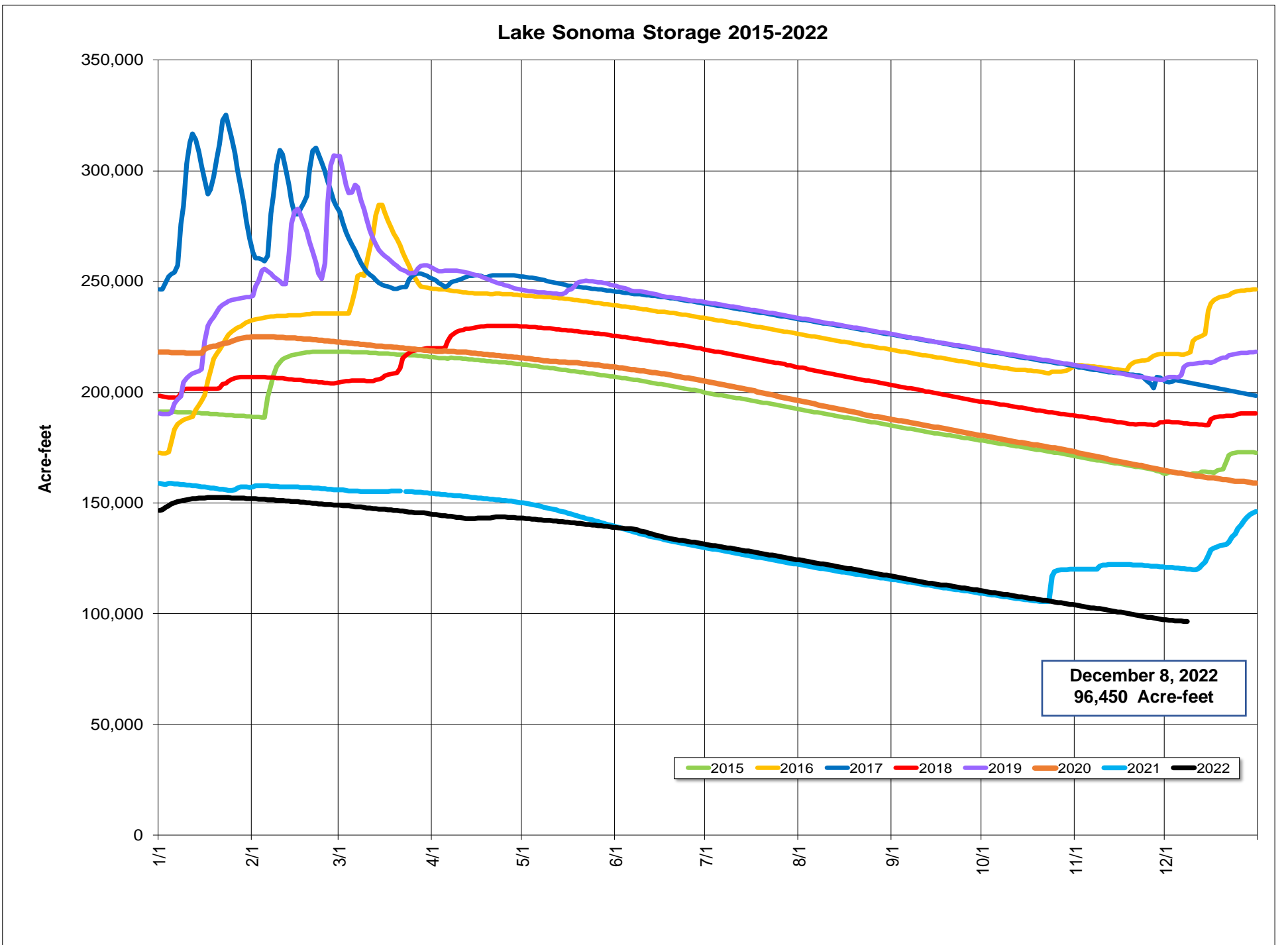


Storage (acre-feet)	December 8, 2022	37,014	
Change in Storage (acre-feet)	Last 30 days	-552	-18
	Last 7 days	91	13
Daily Inflow (cfs)	Last 7 days	Min	18
		Max	79
		Mean	37
Release (cfs)	Last 7 days	Min	26
		Max	31
		Mean	29

Lake Sonoma



Nathan Baskett, March 3, 2011



Storage (acre-feet)	December 8, 2022	96,450	
		Total	Average Daily Rate
Change in Storage (acre-feet)	Last 30 days	-6,052	-202
	Last 7 days	-720	-103
Daily Inflow (cfs)	Last 7 days	Min	1
		Max	121
		Mean	44
Release (cfs)	Last 7 days	Min	107
		Max	261
		Mean	109

Potter Valley Project

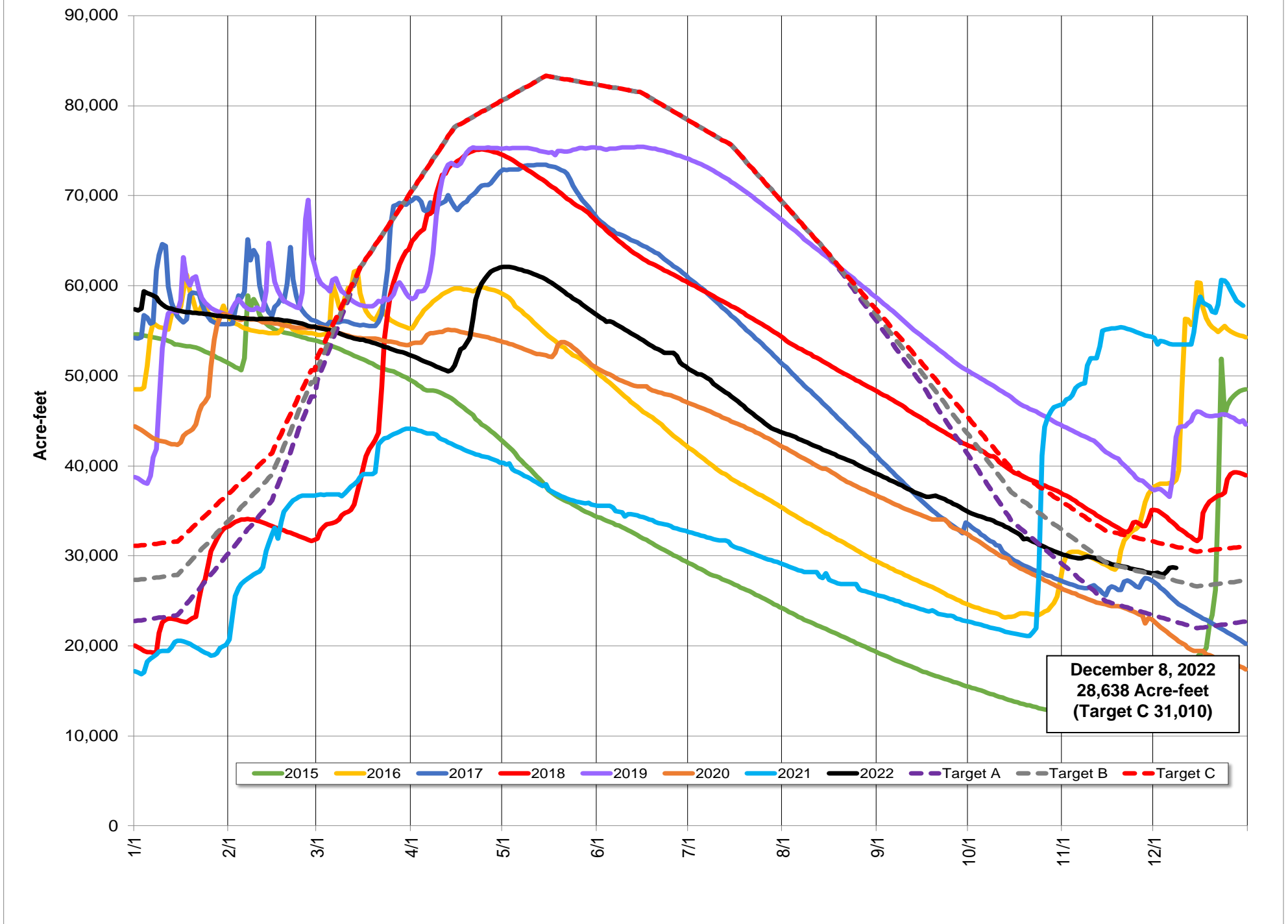
PVP Diversion (cfs)	December 8, 2022	11
---------------------	------------------	----

Lake Pillsbury

Parameter	Date Range	Cumulative	Daily Average
Inflow* (acre-feet)	October 1, 2022 - December 8, 2022	6,934	100
	Last 7 days	2,202	315

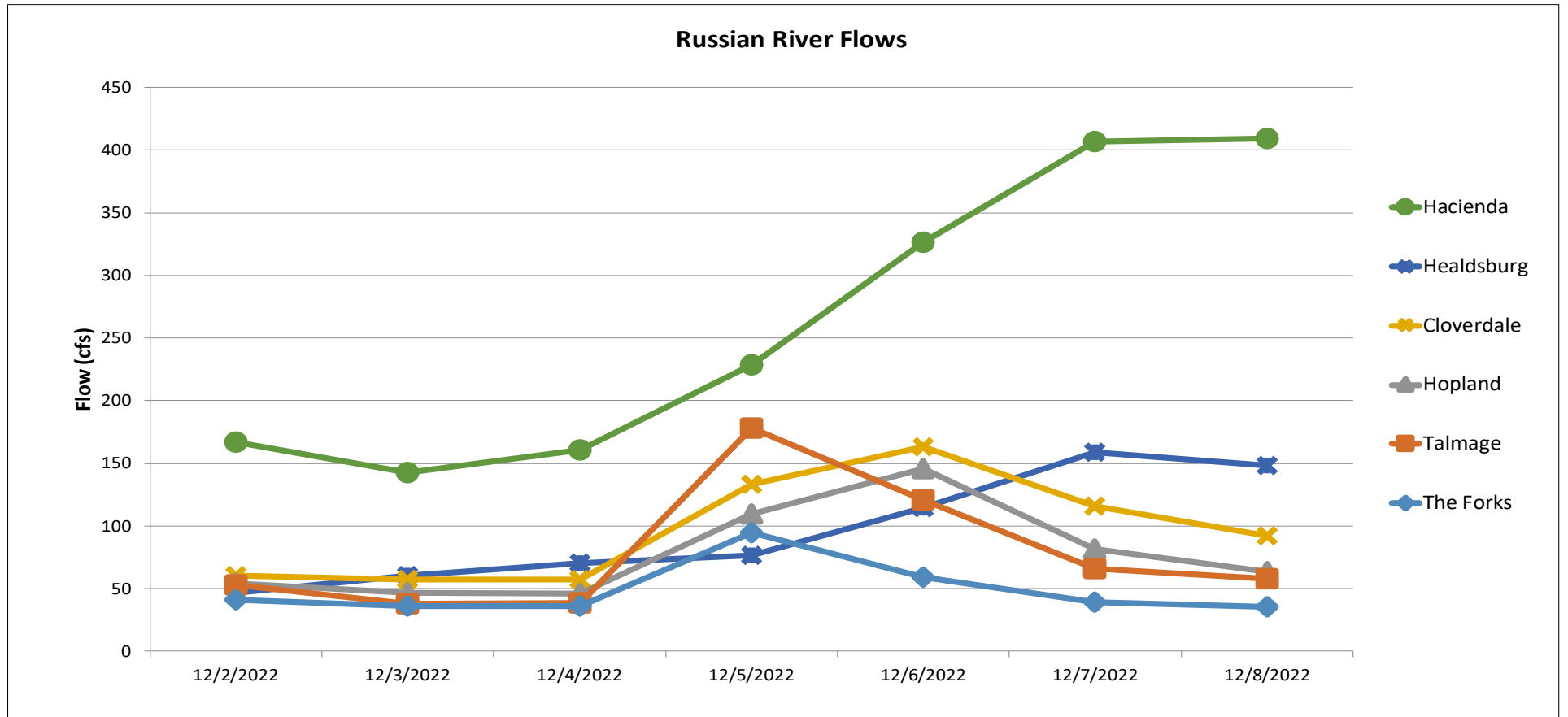
*Inflow calculation based on criteria established in D1610

Lake Pillsbury Storage 2015-2022 and Target Storage Scenarios



Gage	24-hr Average Flow (cfs)						
	Dec 2, 2022	Dec 3, 2022	Dec 4, 2022	Dec 5, 2022	Dec 6, 2022	Dec 7, 2022	Dec 8, 2022
The Forks*	41	36	36	95	59	39	36
Talmage USGS 11462080	53	38	38	178	121	66	58
Hopland USGS 11462500	54	46	46	109	146	82	63
Cloverdale USGS 11463000	61	57	58	133	163	116	92
Healdsburg USGS 11464000	47	61	70	76	115	159	148
Hacienda USGS 11467000	167	143	161	229	326	407	409

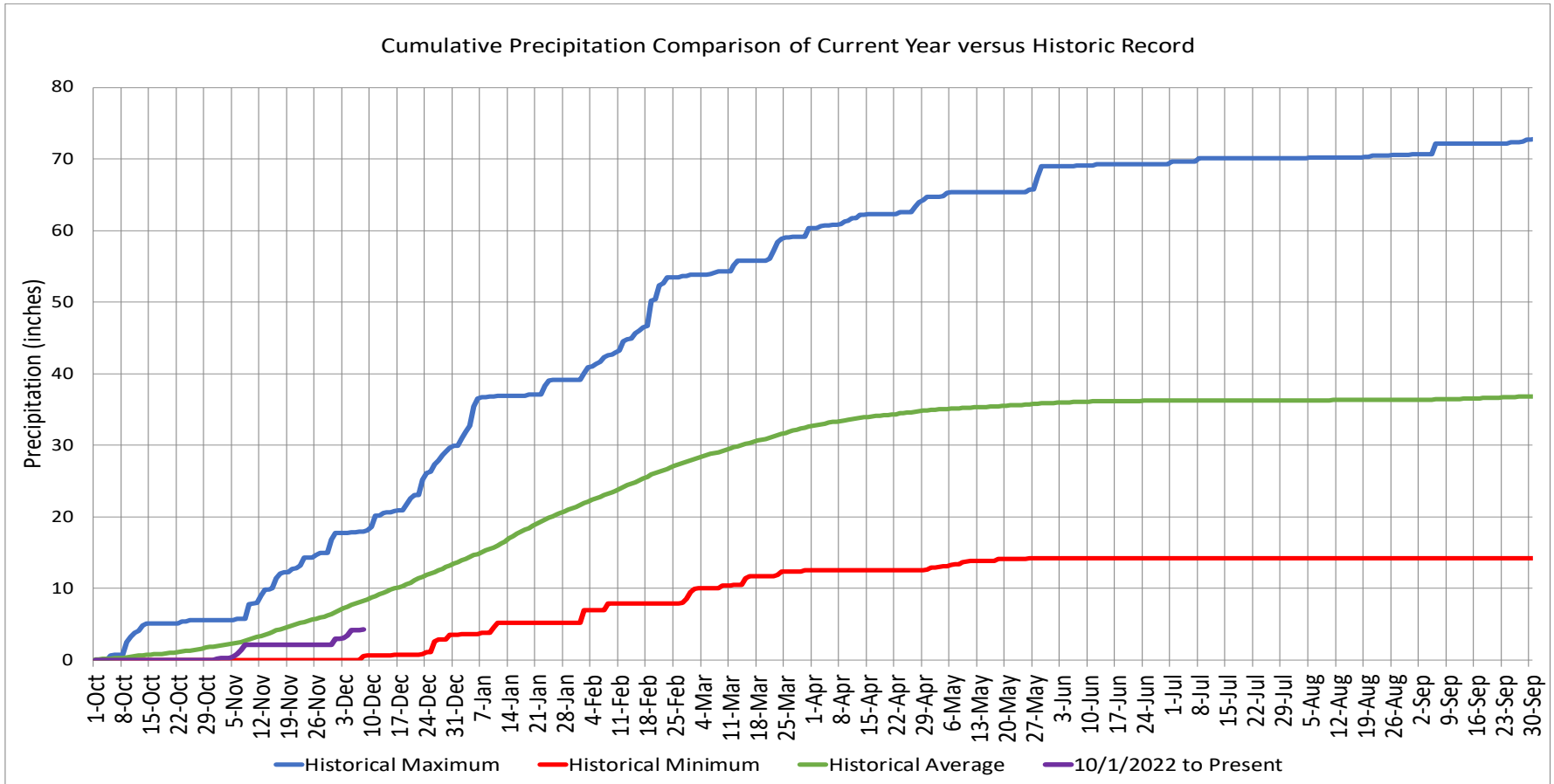
*West Fork(USGS 11461000) + East Fork (Coyote Valley Dam Release)



Precipitation

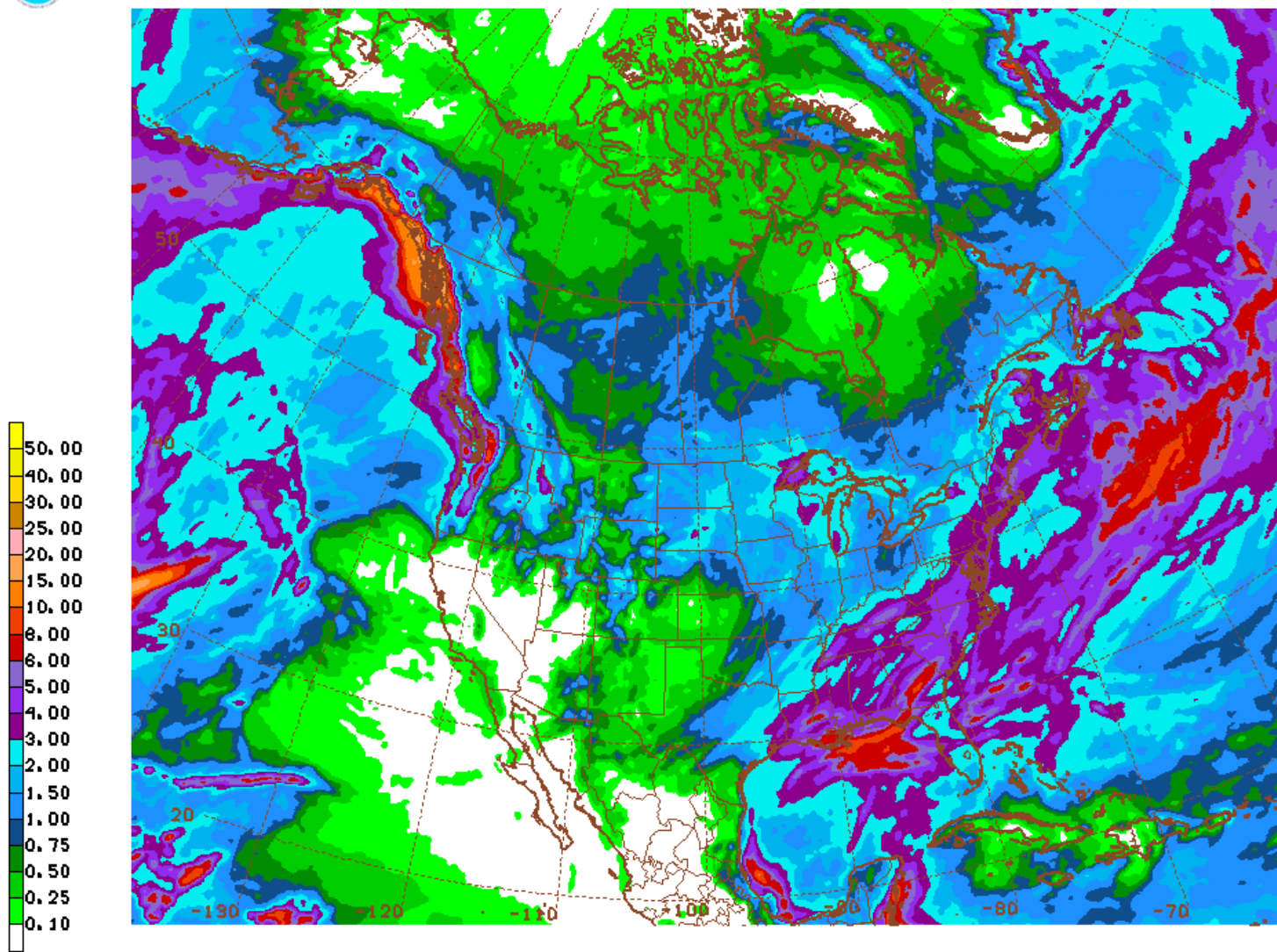
Ukiah Municipal Airport (WBAN: 72590523275 (KUKI))

Date Range	Cumulative (inches)
Oct 1, 2022 - Dec 8, 2022	4.27
Last 7 Days*	1.27



Global Forecast System Model 16-day Cumulative Precipitation Forecast

GFS 12/12/22 12UTC 384HR FCST VALID WED 12/28/22 12UTC NOAA/NWS/NCEP



GFS WED 221228/1200V384 384HR ACCUMULATED PRECIP (IN)

Date Range
Dec 12 - Dec 28, 2022

Forecasted Cumulative (inches)
0.00

Russian River Fisheries Monitoring

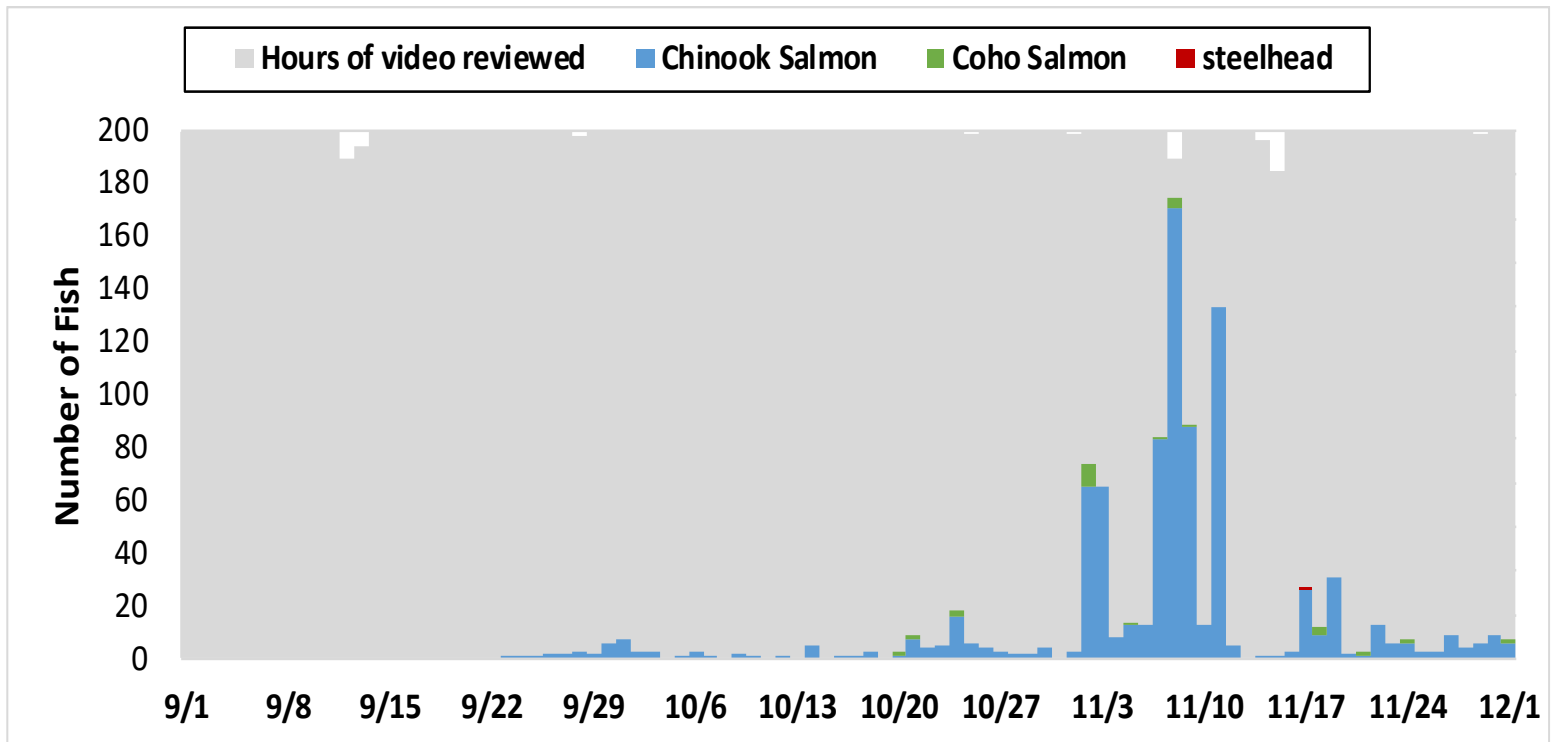


Figure 1. Number of adult salmonids and proportion of each day reviewed for video monitoring data collected at the Mirabel dam, 2022.

Week	<i>Chinook Salmon</i>		<i>Coho Salmon</i>		<i>Steelhead</i>	
	2022	2000-2019 Avg	2022	2000-2019 Avg	2022	2000-2019 Avg
09/01	0	0.05%	0	0.00%	0	0.65%
09/08	0	0.14%	0	0.00%	0	0.65%
09/15	0	0.24%	0	0.10%	0	0.71%
09/22	10	0.59%	0	0.00%	0	0.93%
09/29	22	6.10%	0	0.30%	0	1.30%
10/06	8	3.57%	0	0.61%	0	1.30%
10/13	10	13.30%	0	1.73%	0	2.35%
10/20	43	13.66%	6	3.05%	0	1.42%
10/27	79	17.31%	9	1.12%	0	1.27%
11/03	441	20.08%	7	4.47%	0	2.16%
11/10	156	9.73%	0	8.12%	0	4.88%
11/17	88	7.69%	5	23.45%	1	8.90%
11/24	40	3.37%	1	24.77%	0	14.83%
12/01	6	2.69%	1	7.51%	0	15.17%
12/08		0.74%		9.44%		15.76%
12/15		0.42%		8.83%		15.01%
12/22		0.22%		3.45%		9.24%
12/29		0.09%		3.05%		3.49%

Table 1. Weekly totals of adult salmonids observed on the Mirabel dam video camera.